



OSCAR
PRO

Choosing the Right EMR

A Comprehensive Guide for
Healthcare Providers



Introduction

Whether starting a new clinic or considering a switch, choosing the right Electronic Medical Record (EMR) system is a significant decision that impacts the practice efficiency, quality patient care, and long-term success. Physicians often consider switching their EMR due to cost savings, enhanced features, or the need for better support.

This whitepaper will guide you through the essential factors to consider when choosing a new EMR. We will discuss best practices for a smooth transition and emphasize how the right EMR choice can optimize patient care and streamline your operations.

Essential EMR Requirements for Physicians

EMR requirements vary across Canada due to different provincial and territorial regulations.



Privacy and Security Compliance

Federal level: EMRs must comply with the Personal Information Protection and Electronic Documents Act (PIPEDA) for the collection and use of health data in provinces without specific privacy laws.

Provincial level: Provinces like British Columbia, Alberta, Ontario, and Quebec have their own privacy regulations (e.g., PHIPA, HIA), requiring EMRs to implement role-based access, encryption, and audit logging. Some provinces also have governing bodies, such as OntarioMD in Ontario, that impose additional privacy and security requirements.



Jurisdictional Services

National efforts: Canada Health Infoway promotes integration of EMRs with national health data standards (e.g., SNOMED CT, HL7), supporting initiatives including PrescribeIT.

Provincial systems: EMRs must integrate with provincial systems (e.g., OntarioMD's HRM, Alberta Netcare) for seamless data exchange.



Customization and Functionality

EMRs should meet the specific needs of various specialties, supporting customizable workflows and clinical decision-making while integrating provincial healthcare programs.



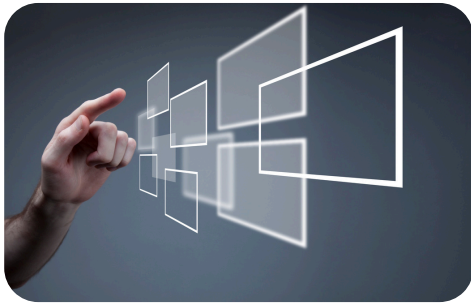
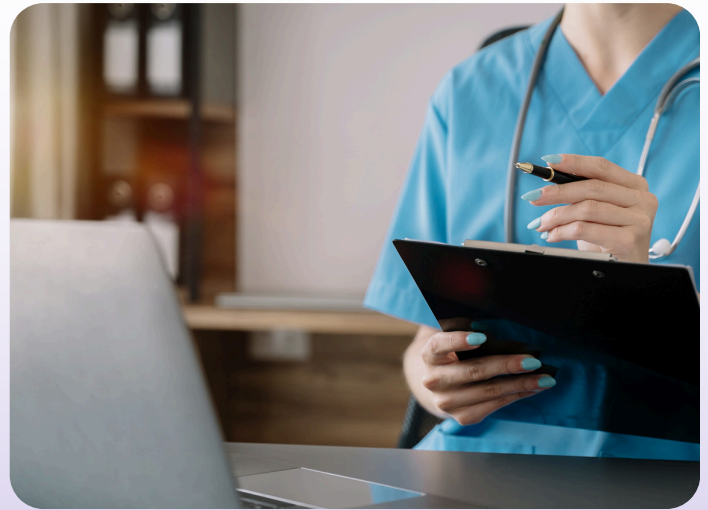
Billing and Claims

EMRs must accommodate provincial billing systems (e.g., MSP in BC, OHIP in Ontario) and handle error-checking for claims. Vendors often tailor systems to local billing practices.

While privacy, security, and functionality requirements are consistent, specific laws and billing practices vary. EMR vendors often customize their offerings to meet provincial needs, ensuring compliance with local regulations. For example, the OSCAR Pro system is popular in Ontario and British Columbia and has certified versions for use in Alberta and other provinces and territories.

Key EMR Features for Your Practice

When assessing EMR systems, focus on what's most important for your practice. Be sure to ask potential vendors about features that align with your specific requirements.



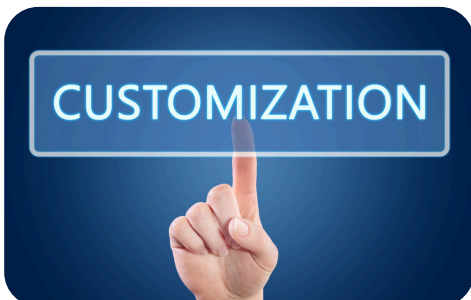
User Interface and Ease of Use

A clean, user-friendly layout reduces training time and helps staff focus more on patient care rather than navigating complex systems.



Integration Capabilities

Seamless connections with labs, billing, and telehealth reduce manual entry and improve data accuracy.



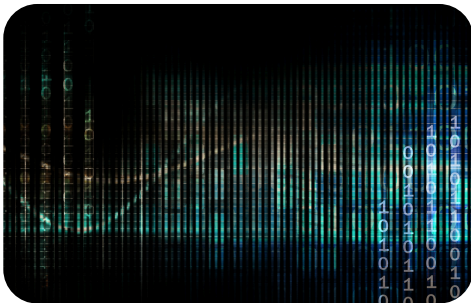
Customization Options

Every practice has unique workflows. Select an EMR that offers flexible customization options, allowing you to easily tailor templates, workflows, and reports to your specific needs.



Data Security and Compliance

Ensure the EMR complies with Canadian standards like PIPA, PHIPA, and PIPEDA, and includes encryption and role-based access to protect sensitive data.



Interoperability

Like data security, interoperability is a key EMR requirement for seamless communication between healthcare systems. An EMR that supports interoperability standards enables efficient information sharing and improves care coordination.



Support and Training

Effective training and support are key to maximizing an EMR's potential. Choose vendors that provide thorough onboarding, training, and responsive technical support.

Choosing the right EMR requires evaluating key features like user interface, integration, security, and customization to fit your practice's needs. Prioritizing these factors ensures smoother implementation and enhances patient care. Additionally, assess vendor support and training to maximize system use. A well-informed decision leads to greater efficiency, better care, and compliance.

Preparing for Migration

STEP 1

Contact Your EMR Provider for Data Provisioning Timelines

Begin by reaching out to your current EMR provider to establish a clear timeline for data provisioning. This step is essential for coordinating the migration process and ensuring that all necessary data is prepared and accessible at the right time.

Request a data extraction timeline, confirm transfer requirements, and plan for potential delays with contingency measures.

STEP 2

Verify That All Data is Up to Date Before Migration

Before initiating the migration, it is vital to verify that all data in your current EMR system is accurate and up to date. This ensures that the data transferred to the new system is current and reflective of your most recent records.

Audit your data for accuracy, completeness, and consistency. Update patient records and remove outdated information to streamline the migration.

STEP 3

Introduce Your Current Vendor for Smooth Collaboration

Facilitate smooth collaboration between your current EMR provider and the new system's vendor by introducing them to each other. This helps ensure that both parties are aligned and can work together effectively.

Arrange email correspondence with both vendors, share their contact details, and ensure a smooth data transfer.



Phases of Data Migration

Once you have prepared for the EMR migration, you can proceed to the data migration phases. This process involves securely and seamlessly transferring your data to the new EMR, aiming to minimize disruption to your workflow and maintain high-quality patient care throughout the transition.

At OSCAR Pro, data migration consists of three phases:

1. Discovery
2. Test Import
3. Final Import

Phase 1

Discovery

During the Discovery phase, the Project Manager collaborates with your team to assess migration requirements, including current data structure and specific challenges. They then create a detailed project outline with timelines and resources, focusing on defining objectives for a successful migration.

Phase 2

Test Import

In the Test Import phase, the vendor collaborates with your team to map and validate data for accurate transfer. This includes running test imports to ensure alignment with the new system, validating data accuracy, and addressing any discrepancies to identify potential issues before the final import.

Phase 3

Final Import

In the Final Import phase, the vendor executes the full data migration based on validated test imports, ensuring accurate transfer and integration into the new system. After thorough checks and adjustments, they proceed with the Go Live, supporting your team during the transition.

Migration to OSCAR Pro

If you're looking to transition from your current EMR, OSCAR Pro stands out for its user-friendly interface and robust features.

Intuitive Charting with eChart

Save time and streamline routine tasks with all patient data accessible on a single, customizable eChart screen.

Streamlined Billing Screen

Our streamlined billing screen supports single-screen invoice creation and improved code search.

AI and Automation Tools

We have integrated advanced AI and automation to boost your practice's efficiency with features like AI-driven dictation, intelligent decision support, and automated e-faxes and e-referrals, simplifying workflows and saving time.



Minimize Errors and Rejections

You can correct and resubmit billing errors directly within the system, helping to minimize revenue loss and improve financial outcomes.

Support and Customizations

We offer extensive support and customization options to ensure a seamless transition and continued success.



Commitment to Security with OSCAR Pro

At WELL Health, we prioritize safeguarding patient data and EMR integrity with OSCAR Pro through:

Cybersecurity Investment: We use cutting-edge technologies to stay ahead of threats.

Offensive Security Testing: Regular ethical hacking identifies and addresses vulnerabilities.

Microsoft Azure: Cloud-based security features enhance protection and scalability.

Secure Development: Secure development practices, including code reviews and vulnerability assessments.

Multi-Layered Defense: Multiple firewalls and defenses deter cyber-attacks.

Our comprehensive approach ensures OSCAR Pro remains a trusted and secure platform for high-quality healthcare.

Conclusion

Choosing the right EMR system can enhance patient care, efficiency, and compliance. This whitepaper provides guidance on selecting an EMR, covering interface, integration, customization, and migration. For those considering OSCAR Pro, its user-friendly interface, streamlined billing, and robust features offer significant benefits, facilitating a smooth transition and improved practice efficiency.

"I've had OSCAR Pro as my OSCAR service provider for five years. I have never been disappointed. They have always answered the phone during business hours. Recently, I changed my office's location, and it went very smoothly thanks to the OSCAR Pro team."

- Dr. Stephan N

Setting up a new practice or considering a change in your EMR provider?

Get started today with a no-risk, no-obligation practice consultation and demo. Email us at info@oscarprodesk.ca.

